



SCANTLINGS

NEWSLETTER OF THE TIMBER FRAMERS GUILD
NUMBER 201

JULY 2016



**Our
Stories**

**2016 Conference &
Community Building Project**

**Ambassador
Program**

SCANTLINGS

Newsletter of the Timber Framers Guild
Number 201 July 2016

IN THIS ISSUE

Director's corner	2
Guild news	3
A farewell and a welcome	4
TFG annual conference snapshot.	5
Community building project.	6
Sculpture walk	7
Featured TFG member project	8-9
Apprentice log	10
Our advertisers	11-12
Events	13
Notices	15-16



Founded 1985

© 2016 Timber Framers Guild. All rights reserved.

1106 Harris Avenue, Suite 303, Bellingham, WA 98225

360-746-6571 www.tfguild.org.

Jeff Arvin, executive director

Maureen Kane, communications director

Megan Starr, executive assistant

Sue Warden, business manager

Mack Magee, president • Brenda Baker, vice president • Steve Lawrence, treasurer • Bill Keir, clerk • Jonathan Orpin, past president • Leon Buckwalter, Rick Collins, Michael Cuba, Ellen Gibson, Gabel Holder, Stephen Morrison, Al Wallace, directors at large

Scantlings, the member newsletter of the Timber Framers Guild, is published in January, February, April, May, July, August, October, and November. **Next deadline: September 1.**

News contributions and correspondence: Maureen Kane,
1106 Harris Avenue, Suite 303, Bellingham, WA 98225
360-746-6571 maureen@tfguild.org

Cover photo: Kettle River Timberworks, LTD.
Seasonal House, Nelson Island, BC

DIRECTOR'S CORNER

JEFF ARVIN

It's time to change things up a little bit.

Way back in 1992, Ken Rower, the forever editor of *Timber Framing*, started *Scantlings* so that TFG's Executive Director at the time would have a way to communicate Guild news more frequently to members. It was a major improvement over a quarterly schedule, but that was before the intertoobs. Twenty-four years later, with digital communication the norm, communicating via a monthly printed piece has become, as some might say, quaint. Or archaic. Or Quixotic. Or, plain old ineffective given the amount time required to prepare, print and mail a monthly newsletter. By the time you get it, the news is the olds. Nonetheless, there's something about sitting down with a printed piece, in a comfortable chair, and leisurely reading news in print.

With our disparate membership, the advantage of digital communication is clear: we can communicate almost immediately. The Weekly Guild Note in combination with our expanded website are far superior ways to communicate time sensitive news. Not all news, however, and maybe the best and most interesting news, is not time sensitive. Our community is full of talented people and great story tellers. Our work is inspiring, our stories are compelling, and *Scantlings* might prove to be the perfect venue for featuring both.

So send us your stories! Following our request in *Scantlings* 200 and repeated in this issue, we are receiving compelling, inspiring, entertaining, and occasionally outrageous stories from you all. Please keep them coming! A quick reminder: we are seeking short stories (200-500 words), written in first person. True or made up. Spelling and grammar don't count. We can fix that stuff, but the wisdom of our community can only come from you—please share liberally!

Yet, this community is not all talk. We also act. We build some of the most remarkable buildings in the world, and I am regularly awed by the work you do. If you're like me, you want to see more. So in this issue we will begin showing the work of the community. This month we feature a home by the folks at Kettle River Timberworks out of Vancouver, British Columbia. It's a wonderful example of what you get when you combine creative designers with skilled crafters and adventurous clients. I hope you can imagine what a daunting task it is to choose one project out of all the splendid work available, but over time we will feature the full scope of work represented by our members, from historic to traditional to modern. We will be looking for something that's a little out of the ordinary. If you have a project to share, drop us a line at info@tfguild.org and tell us what makes that project exceptional.

Hey! In case you haven't heard, we have a conference coming up. After a year's absence we're

See Director's Corner, page 3



TFG Ambassador Program continues – please join us

ELLEN GIBSON

The Timber Framers Guild has members in many states and countries. It exists because of, and for, these members who have a wide range of interests, skills, and reasons for joining the organization. Everyone has different experiences and memories from projects, conferences, and workshops that they share with people in their communities. The Guild is here to support its members in their professional lives and personal interests in timber framing.

Two years ago, after hearing members express an interest in helping to promote the Guild and its mission, TFG started an Ambassador Program with volunteers helping to spread our story. This program is ongoing, and we are looking for volunteer members to help. We are assembling binders containing information about all aspects of the Guild to be used by Ambassadors as a reference guide. There will be a table set up at the September conference in Saratoga Springs, New York to answer questions. We hope you'll come by to find out more about the Ambassador Program.

Would you be willing to use this information for a presentation to a group in your community? Would you take brochures and community build information to your city council or board of trade to see if local projects are needed? Or maybe you could host a regional meeting or technical demonstration and inform local historically-minded groups to attend along with Guild members. You will have all the information you need to talk about the Guild, and all ambassador volunteers have the support and guidance of the TFG staff and board.

Presentations don't have to be complicated and can be as long or short as needed for the occasion. You could present projects you've been involved in and bring some joinery, engineering or tool samples. You could show a Guild community building project video to a local library, trade school, historical society, or woodworking club. Maybe a client would like to know more about the structure, design, and history of their house and would want to share that information at an informal gathering.

Historians, engineers, builders of all kind, and timber frame enthusiasts are engaged in the Guild. Please join

us in volunteering to pass on the mission and spirit of the Guild within your personal and professional communities. Help the TFG build on and highlight its diverse base of talented members and celebrate all the projects that have enhanced our collective communities. Come talk to us at the fall conference about being an Ambassador or contact TFG office, info@tfguild.org or 360-746-6571. It doesn't take much time, and the Guild will back you up. Our story is worth telling and you could help us do that.

TFG/TFEC sponsored research project in development

MACK MAGEE

The Timber Frame Engineering Council (TFEC) and TFG have inked a two-year research contract with the University of Wyoming and Brigham Young University to develop better seismic performance factors for understanding of how stand-alone timber frame structures (e.g., open pavilions) perform under earthquake (seismic) loading. The first phase of the project includes testing of full-scale timber frame assemblies with mortise and tenon joinery. The second phase of the research will investigate complex collapse simulations. The results of the research will be seismic performance factors that structural engineers need to design safe and cost-effective stand-alone timber frames subject to seismic loading.

Additionally, through the efforts of the TFEC and American Society for Testing and Materials, standards have been developed to define the characteristics of a wood dowel (peg) used in timber frame construction. That standard is similar in intent to the standards that define characteristics of structural lumber and timber. However, the bending strength of a standard peg has not yet been quantified. This project will develop a design equation to predict the bending strength of wood dowels (pegs) used in mortise and tenon joinery. It will provide the last piece of the puzzle for engineering design of mortise and tenon joinery. Until now, TFEC attempts to have its design standard adopted as a component of, or supplement to, the National Design Specification for Wood Construction (NDS) have been blocked due to the lack of a suitable design value

See TFEC, page 4

Director's Corner, from page 1

coming back to the New England heartland, and not just with a conference, but with a very ambitious Community Building Project that will culminate with a hand-raising the day before the conference starts. Check out conference details and read more about how the project came to be in this issue.

Finally, as you will read in these pages, we say so long to Accacia Mullen, who has held the reins of this publication for the last two years. We thank Accacia for keeping the fire burning, and at the same time welcome Maureen Kane, TFG's communications director to the helm.

Keep in touch.

TFEC, from page 3 (strength equation) for dowel bending. The outcomes of the proposed research will eliminate that challenge.

The principal investigators are John P. Judd, Ph.D., S.E., Dept. of Civil and Architectural Engineering, University of Wyoming and Fernando S. Fonseca, Ph.D., S.E., Dept. of Civil and Environmental Engineering, Brigham Young University.



Farewell message from Accacia Mullen

Scantlings 200 was my last issue as editor. In 2014 Susan Witter asked me if I was interested in working on some Guild publications, as she was preparing to transition out of her editor role. I gladly signed on. I started by writing the Weekly Guild Notes, and slowly took on more of a role editing Scantlings. I have enjoyed learning more about the Guild—the members, the leadership, the history, the projects—and being part of the organization. I have also learned that it's more difficult than I expected to manage the responsibilities of the Scantlings editor while working full time as an academic reference librarian. Scantlings and Guild Notes are now in the capable hands of Maureen Kane, Guild communications director. I'm not completely disappearing, though; along with my husband, Grigg Mullen III, and in-laws, Grigg Jr. and Cindy, I'm sure I'll be seeing some of you at conferences and other events in years to come. Thanks for welcoming me into the Guild and the editor's desk!

-Accacia Mullen



Welcome to Maureen Kane

I am so pleased to have joined the team at TFG. From the beginning, I have enjoyed getting to know the staff, members, and board. I am grateful for the enormous amount of time and dedication of our volunteer directors and committees. Being a person who loves to learn, I have had plenty of opportunity to learn about the Guild, timber framing, and the membership. I look forward to meeting many of you in person. My background includes a twenty-year career as a marketing and nonprofit director or manager for small and large businesses, nonprofits, and schools. I especially enjoy strategic planning and mapping communications plans to strategic goals. In my free time, I enjoy combining my passions for nature, photography, and family. I am fascinated by the art of timber framing and am honored and humbled to work for an organization in which my boss crafted my desk.

-Maureen Kane

Our Stories... coming soon

"If you're ever in a plane and the plane is going down, forget the parachute and grab a garden hose or an electric cord. That son of a gun will get hung up on something and save your life!"

This is an excerpt from a submission by John Van Bruggen, owner of Clydesdale Frames Co. on the topic of Teachers. Read the full story in the August Scantlings.

We know you all have stories. Send us your 200-500(ish) word stories related to the topics to the right. We promise to help you edit if you are shy. Feel free to

contact Maureen if you have any questions at all. Send your submissions to maureen@tfguild.org

Topic	Deadline	Published
First Time	Aug. 1, 2016	Oct. 2016
Craft	Sep. 1, 2016	Nov. 2016
Tools and tool boxes	Oct. 1, 2016	Jan. 2017
Students	Nov. 1, 2016	Feb. 2017
Tradition	Dec. 1, 2016	Apr. 2017
Last Time	Feb. 1, 2017	May. 2017
Value	Mar. 1, 2017	Jul. 2017



TIMBER FRAMERS GUILD

31st Annual Conference

Featured Speakers

Rudy Christian



Take a journey with Rudy to experience the traditional ways of building the historic timber palaces and monasteries of Mandalay and how this knowledge led to the discovery that the Golden Palace Monastery is actually two buildings from King Mindon Min's Royal Palace which were joined together to become Shwenandaw Kyaung.

William Bryant Logan

Up until only about 150 years ago, oak was a key part of the wealth of tribes and nations. It gave us food, and taught us everything from road building to sailing. OAK AND US is a quick sketch of this millennial relationship.



www.williambryantlogan.com

Kevin Ireton



Kevin Ireton, is the English major who became a carpenter and who became the editor of Fine Homebuilding Magazine. He now works as a freelance builder and writer. Kevin is a deep thinker and engaging speaker. He will share his vision of challenges and opportunities as builders of fine homes.

www.finehomebuilding.com



Gideon Putnam Hotel, Saratoga Springs, NY

"With five full tracks of speakers to select from, attendees are sure to be intrigued, entertained and challenged. This conference lineup has something for everyone from the business owner to the craftsperson."

-Amy Good, conference committee member



Join us as we help to build the Champlain Canal Region Gateway Visitors' Center in Schuylerville, New York prior to the conference. September 5-15 with a hand raising on the 14 and 15th. More information www.tfguild.org

5 Exciting Tracks!

- Skills for timber framers
- Building science
- Design and engineering
- Historic preservation
- Business

Register Today: www.TFGuild.org

Community Building Project: Gateway Visitors Center

MACK MAGEE

Several years ago, Joe Finan, Park Superintendent, Saratoga National Historic Park, approached Joel McCarty and Alicia Spence to enlist the Guild to fabricate and erect the timber frame for the first phase of a visitors center to be constructed in the village of Schuylerville, NY.

Officially the Canal Region Gateway Visitors Center (GVC) will serve to “direct visitors to the canal region’s waypoint communities, heritage centers, and attractions; provide an introduction to the activities and interpretative themes of the region; and provide interpretation of key features of the Gateway Visitor Center site.” (Canal Regions Gateway Visitors Center Conceptual Design Study, Saratoga Associates)

Besides featuring the Champlain Canal and Erie Canalway National Heritage Corridor, the GVC will feature the Saratoga National Historical Park and the initiatives of the Historic Saratoga-Washington on the Hudson Partnership.

Using the requirements developed by the design committee and the architectural style influences of the region at the time of its settlement, Saratoga Associates developed the design using a timber frame structure as would have the buildings built at the time of the Revolutionary War when this area was being settled. The Historic Hudson-Hoosic Partnership is a 24-agency

consortium overseeing the project. As with any project involving such a large group of stakeholders, the project development and design extended over years. As the process moved towards construction, the Guild hired Neil Godden to be the project manager and Mike Beganyi to be the designer.

Before they could get engaged, the inevitable Friday afternoon emergency call came in: The partnership needed a timber list for the following Tuesday Saratoga County forestry planning meeting. The emergency was compounded by a decision to make the raising a hand-raising and to work towards hosting it in the two days before the annual conference this year. So, Mack and Ben Brungraber of Fire Tower Engineered Timber convened an emergency session to re-design the frame from a hybrid bent and wall structure with principal rafters and common purlins to a wall structure with purlin plates and common rafters more amenable to a hand-raising, and then sized the members for the client. Later, the team incorporated characteristics of the Dutch barn frames native to the area into the design.

“The timber frame is a modern take on a traditional Dutch style barn that was common in the Hudson Valley,” states Mike. “The traditional design has been adapted to meet program requirements for a visitor center which will house interpretive displays, rotating

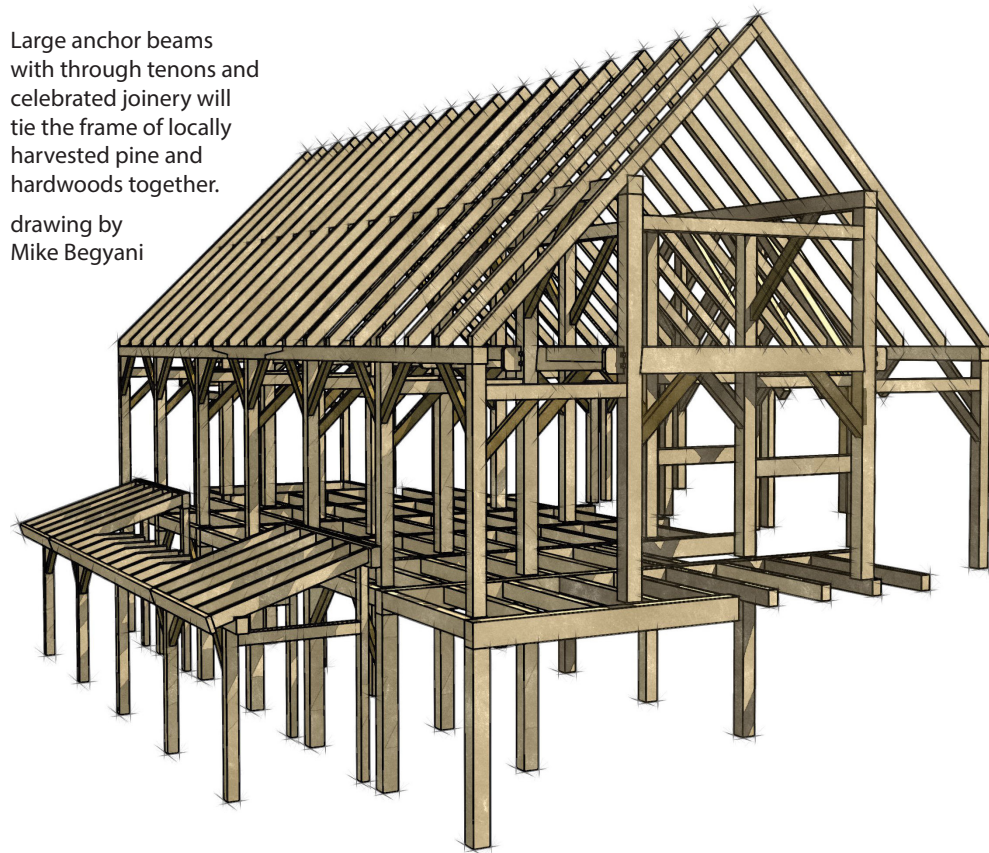
exhibits, and host community events.” Large anchor beams with through tenons and celebrated joinery will tie the frame of locally harvested pine and hardwoods together. Additionally, they lowered the outshot beams to improve connections, removed unnecessary braces to open the floor plan, and made extensive design changes to exterior porches.

The timber frame is comprised of roughly 300 pieces and 30,000 board feet of timber. The exterior timber and interior braces will be hardwood and the balance of the timber will be Eastern white pine. Neil and Joe chose a local sawmill, Mead Lumber Company of Queensbury, NY, to saw the locally sourced logs.

See Schuylerville, page 7

Large anchor beams with through tenons and celebrated joinery will tie the frame of locally harvested pine and hardwoods together.

drawing by
Mike Beganyi



Schuylerville, from page 8

Recently at the annual meeting of SIPA conference in Puerto Rico, Mack and Jonathan Orpin proposed to SIPA executive director Jack Armstrong and SIPschool president Al Cobb that they host a demonstration project and SIPschool training session at the site. This would extend the community outreach and benefit both timber framers who use SIPs to enclose their structures and SIPs manufacturers and installers. Jack and Al enthusiastically signed on.

The result is a significant project for the Guild that includes timber supply, two timber frame workshops, and a SIPs demonstration project and installation training, all of which are open to the Guild community and the local community.

The first workshop, August 8-12, will fabricate and erect the walkout level of the timber frame; and the

second workshop, September 5-15, is to cut and raise the upper and mezzanine levels with the hand raising on September 14th and 15th followed by the SIPs demonstration which commences at the close of our annual conference.

The project team, Guild staff, board, Township of Saratoga, and the partnership of those 20-plus local and regional stakeholders are looking forward to what we all expect will be an excellent educational workshop series and a widely popular and informative community event. We hope to see many of our Guild community participate, especially at the hand raising prior to the conference, once again demonstrating our dedication to the art and science of timber framing as well as the vision and values of our community. Guild members are encouraged to register for free at www.tfguild.org.

Sculpturewalk

CHRISTOPHER PETERSEN

With the help of my friends, Hans Winter and Spring Shine, we designed and built this 8x8x24 ft. Sculpturewalk in my shop in Argenta, BC. Western red cedar was an obvious material as I had a deck of 6 to 8 foot logs left by an excavator from a recent visit to my shop.

This year, we wanted to enter a design that would allow visitors to experience the piece. Early sketches were soon modelled in Dietrich's, and many pages of drawings followed. Dreaming a complicated timber project was easier with a skilled navigator, quickly modelling crazy ideas.

Notching the 148 pieces was straight forward, allowing for shop made pipe nut fasteners. Consideration for public safety was met by some advice from an engineer, like a 2 x 3/4 inch plywood foundation with structural screws.

We were able to keep it rigid with 1/2 inch threaded rod from end to end. This rod travels through 1 inch holes in the 4 x4s and through 5 inch lengths of re-purposed sawmill roll case, each piece of pipe was housed 1/2 inch into the cedar 4x4.

All in all we were pleased with the finished piece, the light plays nicely, and I look forward to seeing it with snow all around.

Editor's Note: Christopher's piece has been entered into an outdoor sculpture competition in BC called Castlegar Sculpturewalk.



Sculpturewalk Photo: Chris Peterson

FEATURED TFG MEMBER PROJECT

Kettle River TimberWorks Ltd. Seasonal House, Nelson Island, BC

The Facts

2 stories • 1050 sq ft • 1 bedroom • framed in douglas fir

Design Challenges

remote topographically challenging island location
• boat access only • materials barged to the island and helicoptered to the site

Timber Framer Statement

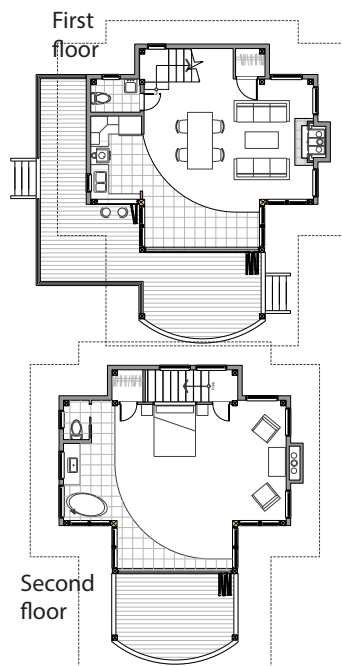
“The uniqueness and location challenges of this project, coupled with the amazing clients made this one of our favorite builds to date.”

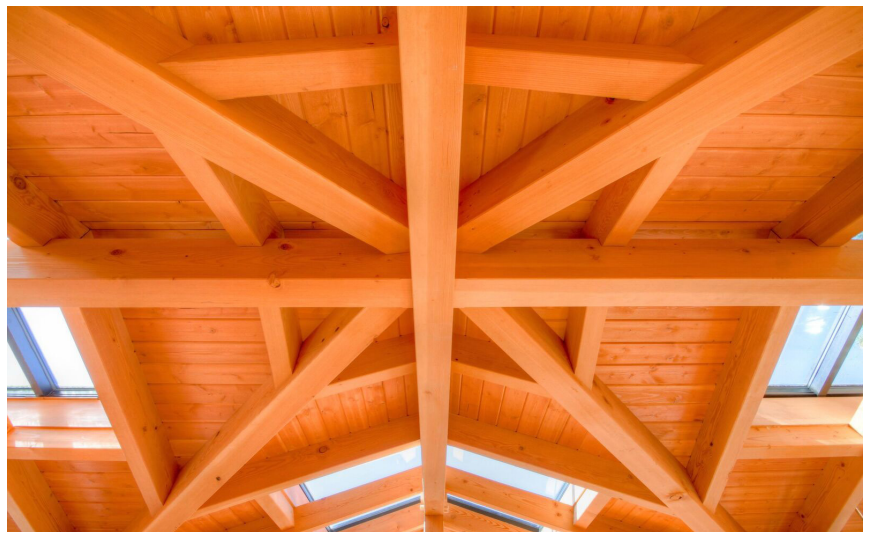
Notable Features

completely off grid • rain-water recovery and filtration system • solar power • composting toilets • wood heating • cantilevered timber staircase • extensive glasswork and skylights • open concept design

The Team

Everything was handled by Kettle River • Timber frame design by Guild member Andrew Preston.





APPRENTICE LOG



From the Apprenticeship Training Program

CURTIS MILTON

Leading up to the 2016 Apprenticeship Training Program's Annual Assessment and Training, this year at Cascade Joinery in Bellingham, WA, several exercises were distributed to apprentices and attendees to help prepare for the event. Below is a sample of resources on the topic of Center of Gravity. If you are interested in the rest of the pre-event exercises from this year, please contact the Apprenticeship Training Committee at atc@tfguild.org.

2016 ATP Assessment and Training Week 2 Center of Gravity Calculations and Application

“Calculating for safe rigging, if it seems a lot of work, is really a simple process of solving individually for each part of the system and then putting all the parts back together. Don't get spooked, just start with the load to be lifted and work forward from there.” - *Grigg Mullen*

We have all done a bit of trial and error lifting, but this can be an expensive exercise with a crew, crane, and crowd of onlookers. Get it right the first time, do the math. Trust your experienced intuition, but verify. Initially most of us think of lifting as a two-dimensional affairs but many companies move to three-dimensional lifts when advantageous. In fact, the entities that legislate lifting safety direct us to consider assembling on the ground as a reasonable method to reduce the risk of working at height.


The Goal: A well-managed load is a safe load

“By selecting the center of gravity as the reference point for a rigid body, the gravity forces will not cause the body to rotate, which means the weight of the body can be considered to be concentrated at the center of mass.” (*Kleppner & Kolenkow 1973, An Introduction to Mechanics, (2nd ed.)*)

There are hundreds of exercises online teaching us to determine the center of gravity for a load. One example is on the Sims Crane Company blog at www.simscrane.com/blog/2014/06/how-determine-center-gravity-any-load. This article includes graphic methods that can be used to establish the center of gravity and shows the relationship between area and weight, and between volume and weight.

Another great resource is an article Grigg Mullen authored in Timber Framing 67:10. You can download it at www.tfguild.org/downloads/center-of-gravity-pre-test.pdf. Grigg takes the discussion all the way to hand raising calculations.

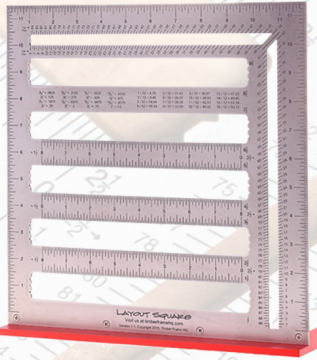
If you'd like to test your knowledge, you can download the ATP Center of Gravity Pretest at www.tfguild.org/downloads/center-of-gravity-pre-test.pdf

**TIMBERFRAME**
HEADQUARTERS

LAYOUT SQUARE

- Increases accuracy
- Speeds up layout
- Helps in reference edge layout
- Replaces framing square & protractor

Learn more today!
timberframehq.com/layoutsquare



Founder's Chapel on Ansley Golf Club, Atlanta, GA. Engineered for MoreSun Custom Woodworking, Inc.

ELEVATING THE DESIGN & ENGINEERING OF TIMBER STRUCTURES

Bringing a Modern Perspective to an ancient craft, Fire Tower specializes in timber structures and related systems.

Ben Brungraber, Ph.D., P.E.
Mack Magee, M.S.
Duncan McElroy, P.E.

Joe Miller, Ph.D., P.E., P. Eng.
Dick Schmidt, Ph.D., P.E.

Talk to us about your next project, large or small.

Licensed in:
USA: AZ, CA, CO, CT, DE, FL, GA, IA, ID, IN, KS,
KY, LA, MD, MA, ME, MI, MN, MO, MT, NC, ND,
NH, NJ, NY, OH, OK, OR, PA, RI, SC, TX, UT, VT,
WA, WI, WY
Canada: AB, BC, ON, SK



FIRE TOWER
ENGINEERED TIMBER
27 SIMS AVENUE, UNIT 2R
PROVIDENCE, RI 02909
401.654.4600 • WWW.FTET.COM

Your trusted partner for
crafted timber work.



CascadeJoinery.com Phone 425.212.2219



**CASCADE
JOINERY**



**SMALL PLANET
SUPPLY**

High performance building
envelope products shipped
in 48 hours to anywhere in
the US, Canada, & Alaska.

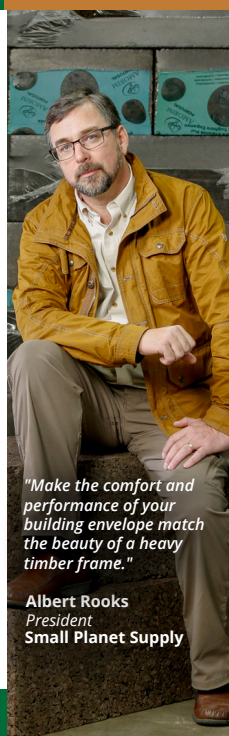
Building The World of **HIGH PERFORMANCE**

The Small Planet Supply
is your worldwide link to
knowledge and access of
specialty products for the High
Performance Building
Envelope.

We Proudly Represent:
Zehnder, Siga®, Agepan,
Roxul®, Heco, Prosoco,
Hannoband®, Passivhaus
Institut and more.

(360) 866-8779
Toll Free (855) 367-7442

www.smallplanetsupply.com



*"Make the comfort and
performance of your
building envelope match
the beauty of a heavy
timber frame."*

Albert Rooks
President
Small Planet Supply

EAST FORK LUMBER COMPANY

Working for over 30 years toward a sustainable
rural economy and wise use of our natural
resources. Manufacturing Douglas fir, Port
Orford cedar, and western red cedar timbers
and wood products in Myrtle Point, Oregon.

Below: Tumblebug fire salvage,
Willamette National Forest,
December 2012



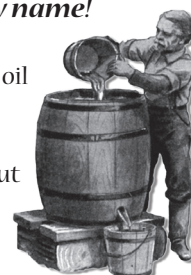
www.eastforklumber.com
(541) 572-5732 • eflc@uci.net

HeritageTM Natural Finishes

Formerly called
Land Ark Natural Wood Finishes.
Same great finishes, new name!

High quality, all natural penetrating oil
finishes for wood and earth.

Fast, reliable service! We get orders out
in 1-2 business days.



Contact us for free samples.

Heritage Natural Finishes, llc

2214 Sanford Dr., Unit 8B

Grand Junction, CO 81505

(541) 844-8748 or 1-888-526-3275 toll free

www.heritagenaturalfinishes.com

"We trusted Pioneer to deliver 38,000bf of large dimension reclaimed Douglas fir on schedule... and they did it."
 - Newell Pledger-Shinn, Hardwick Post and Beam




Pioneer Millworks
 RECLAIMED & SUSTAINABLE WOOD PRODUCTS

With 25 years of experience & inventory on each coast, your reclaimed timber project is easy to source.
 Contact us for a quote :: 800.951.WOOD :: pioneermillworks.com

RELIANCE

**TIMBERS & MILLWORK
 FROM THE PACIFIC NORTHWEST**



800.697.4705—509.466.9300
WWW.RELIANCESBP.COM
SALES@RELIANCESBP.COM

TIMBER TOOLS

The first NEW traditional socket framing chisel in a hundred years:



Our BUFFALO TOOL FORGE chisel.
 One-piece forged. Bevel edge.
 Ergonomic handle. Balanced feel.
 Edge life extraordinaire.

TIMBERTOOLS.COM
1-800-350-8176



ESL
 EVERGREEN SPECIALTIES LTD.
 (1990 - 25 Years - 2016)

877-988-8574
brucelindsay@shaw.ca



Your Vision

» CONSULTING – SPECIFY, DOCUMENT – SUPPLY
 » D-FIR, RED CEDAR, PT. ORFORD, YELLOW CEDAR

Our Timbers

EVENTS



These listings are for Guild workshops and meetings, were submitted by Guild members, or announce other relevant events.
For more info on Guild events or to register for any TFG project, reach TFG at 360-746-6571 or info@tfguild.org

Guild tours and events

Schuylerville Community Building Project Phase 1: First Floor

Walkout/Timberframe Aug 8, 2016 - Aug 12, 2016

Champlain Canal Region Gateway Visitors' Center

Schuylerville, New York.

Guild Office, 360-746-6571

www.tfguild.org/events/schuylerville-first-floor-walkout

Schuylerville Community Building Project Phase 2: Timber Frame

Fabrication and Hand Raising Sep 5, 2016 - Sep 15, 2016

Champlain Canal Region Gateway Visitors' Center

Schuylerville, New York.

Guild Office, 360-746-6571

www.tfguild.org/events/

[schuylerville-timber-frame-fabrication-and-hand-raising2](http://www.tfguild.org/events/schuylerville-timber-frame-fabrication-and-hand-raising2)

2016 TFG Annual Conference Sep16 - 18, 2016

Preconference Sep15

Trade Show Sep16 - 17

Gideon Putnam Hotel

Saratoga Springs, New York

Guild Office, 360-746-6571

www.tfguild.org/events/2016-tfg-annual-conference

other events

Rendezvous Workshop At The Great Tithe Barn Of Aclou

Aug 28, 2016 - Sep 3, 2016

info@carpentersfellowship.co.uk

Sobon-Carlon

Sep 21, 2016 - Sep 25, 2016

Traditional timber framing with Jack Sobon and Dave Carlon, Hancock Shaker Village, Pittsfield, Mass. \$620.

Dave Carlon, 318 Bates Rd, Windsor, MA 01270, tel. 413-684-3612, dcarlon01@aol.com

Jack Sobon, 613 Shaw Rd, Windsor, MA 01270, tel. 413-684-3223, jacksobon@verizon.net

Timber Framing & Wilderness Self Reliance

Shaver Lake, California in the central California Sierra Nevada mountains

Sep 10-17 2016

408-489-0819

Dirtlabbushcraft@gmail.com

Dirtlabbushcraft.com

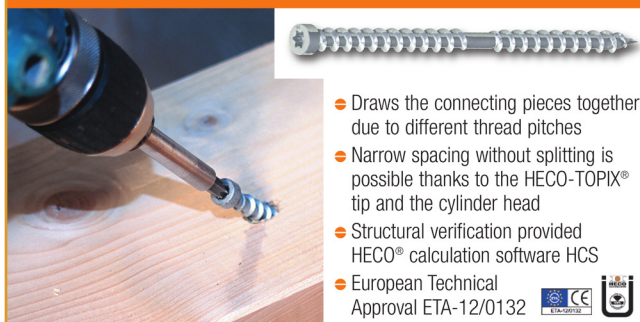
The wood screw for the professional: HECO-TOPIX®



- Revolutionary tip and shank design
- Easy to handle
- No predrilling required
- Much less risk of splitting the wood
- Lower driving torque
- European Technical Approval ETA-11/0284



The perfect wood connector for engineered timber construction: HECO-TOPIX®-CC



- Draws the connecting pieces together due to different thread pitches
- Narrow spacing without splitting is possible thanks to the HECO-TOPIX® tip and the cylinder head
- Structural verification provided HECO® calculation software HCS
- European Technical Approval ETA-12/0132



Authorized Distributor



613.673.1428

www.herrmannframes.com

PRECISION-MILLED, OAK & DOUGLAS FIR TIMBERS



- White Oak and Red Oak up to 40'
- Douglas Fir up to 50', dense and free of heart center
- All timbers grade-certified

Call or write for free timber price list: 1-419-368-0008
Fax timber list for free quote: 1-419-368-6080

Hochstetler Milling, Ltd.
552 Hwy. 95 Loudonville, OH 44842



Notices are for one-time events and offers, and they run free to Guild members for two issues per year. The cost to non-Guild members is \$60 per notice per issue. A notice, whether free or paid, runs for a maximum of two issues. Notices are intended for onetime events and offers; appropriateness for inclusion is decided by the content manager.

for sale

Tools.

- Protool CSP132e 14-in. 220V with dado heads(2), 100-ft.cord, rip fence, guides, \$3,000 OBO
- Mafell 25ec band saw, \$4,500 OBO
- Makita planer 12" KP312, \$1400 OBO
- Makita curved base planer 1002ba, \$250
- Makita sander 9741, \$200

Shipping will be calculated separately.

joyoffish2@sbcglobal.net

C-20 Concentrate

10 gallons of Industrial Timber-Tec C-20 Concentrate to treat pine logs and timbers. Will make 20 gallons of solution.

Used to reduce/eliminate blue stain on pine. \$75.

978-249-9633

tgmusco@gmail.com

help wanted

Field Carpenter and Shop Manager

Trillium Dell Timberworks is hiring a field carpenter and shop manager. Both positions have excellent pay with benefits including health, IRA, and vacation time. Both positions require successful previous timber frameexperience of journeyman level. Both positions require an extensive and complete knowledge of general construction. We are seeking career oriented, problem solving individuals with a great attitude and a superb work ethic. Both positions require computer skills, a high degree of organization, and leadership abilities. If you would like to make a profitable career of your passion with a company that is an industry leader and innovator please contact us. Openings are immediate.

1283 Davis Rd, 1600 N.

Knoxville, IL 61448

309-289-7921

r.collins@trilliumdell.com trilliumdell.com

Experienced Joiners.

Homestead Timber Frames is searching for two experienced joiners. Good pay. A wonderful community on Tennessee's beautiful Cumberland Plateau.

21 Duer Ct.

Crossville, TN 38555

931-484-7059

bruce@homesteadtimberframes.com homesteadtimberframes.com

Shop Foreman and Journeyman Carpenters

Green Mountain Timber Frames, located in S.E. Pennsylvania, has immediate openings for a shop foreman and journeyman carpenters. We are a full-service, hand-cut shop that specializes in out of the ordinary architectural timber framing and French-scribe

projects. Candidates must possess a positive work attitude, be team players, have an exacting eye for quality, and use all related tools & equipment proficiently. Occasional travel/overnight stay is required. We offer company-paid holidays, vacation, health insurance, and a great work environment.

2101 N. 13th St. Reading, PA 19604.

610-929-9600

bruce@gmtimberframe.com gmtimberframe.com

Journeyman Carpenter

Nicola LogWorks builds handcrafted log homes (dovetail, scribed, post and beam) and timber frames. We also put our heavy timber skills to work on commercial out of town installations of cross laminated timber and gluelam. We are looking for a journeyman carpenter with a four-year certificate in the European tradition or equivalent. Massive wood joinery. Crane experience with ticket(s) an asset. Must be physically capable of heavy work and willing to travel out of town from time to time. Job includes layout, cutting, and assembling massive wood; reading and interpreting blueprints. Our ideal candidate will also bring Dietrich's CAD, surveying, and log building experience.

Merritt, BC V1K 1C2

Canada

250-378-4977

john@logworks.ca logworks.ca

Timber Frame Structural Engineer

We are looking to hire a licensed engineer to review timber structures for our post & beam/timber frame company. Familiarity with timber joinery required. Ability to stamp in multiple states is very desirable, especially California. Compensation commensurate with experience; applicant need not be local. Excellent benefits.

613 Hwy 46 E

Boerne, TX 78006

402-992-3403

jdickinson@texastimberframes.com texastimberframes.com

HSBCAD Designer.

Daizen Joinery is timber frame manufacture balancing Japanese hand craft with CNC production combined, commit for high quality work. Currently looking for a designer who has experience in HSBCAD is preferred. This is a full time position.

2947 Shuswap Rd East

Kamloops, BC V2H 1S9

Canada

dai@daizen.com www.daizen.com

Timber Frame Designer

Texas Timber Frames is looking for an experienced timber frame designer with knowledge of CAD and HSB to join our fast growing company. Previous experience will determine compensation. Opportunities for project management are part of the job depending on performance.

613 Hwy 46 E

Boerne, TX 78006

210-698-6156

aarizpe@texastimberframes.com texastimberframes.com

employment wanted

Work Wanted

Need an extra hand that can jump right in and cut joinery? I am looking to complete my calendar for 2016 with timber framing work on a project-by-project basis. Former Heartwood apprentice with 3 years' experience including production-style shop work. I've worked for others and have designed/cut my own frames. Have tools including mortiser, circular saws, and all hand tools. Have general liability insurance. Especially interested in projects involving scribing, round timbers, challenging joinery, but I find joy in basic frames as well. Open to projects ranging from 1 week to several weeks. I'm local to Massachusetts but will go anywhere. References upon request.

Whately, MA 01391

843-687-5708

jsant27@gmail.com

When Execution Matters



FraserWood RF Drying Solutions



Contact us today.

(888) 898-1385

www.fraserwoodindustries.com

ENGINEERING DESIGN & REVIEW

Timber Frames

Structural Insulated Panels

3D Modeling

Full Structural Services

30 Years Experience

Licenses in 15 States

SELLERS TREYBAL



Williston, VT

802.497.1174

John@STS-Engineers.com

www.STS-Engineers.com

John Treybal, P.E.

Greg Sellers, S.E., LEED AP

Our readers want to know about your products and services.

This could be your ad!

Be seen by over 1,000 people.
Connect us to advertise in Scantlings.

info@tfguild.org

mafell

Chain/Slot
Mortiser



Chain Beam Saw

Portable Band Saw



Circular Saws
and more...

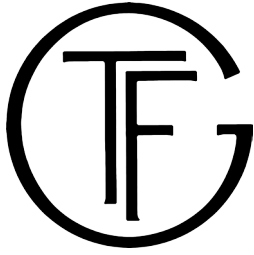


**TIMBERWOLF
TOOLS**

timberwolftools.com

800-869-4169

Your best source for the world's
finest Timber Framing Tools



Timber Framers Guild
1106 Harris Avenue, Suite 303
Bellingham, WA 98225

SAVE THE DATES!

2016 TFG Annual Conference

Timber Framing Today – Joining the Past and the Future

Gideon Putnam Hotel
Saratoga Springs, New York
September 16 – 18, 2016

Pre-conference: September 15
Main Conference: September 16-18
Trade Show September: 16-17

Community Building Project in Schuylerville NY

Phase 1 – first floor walkout/timberframe: August 8-12.
Phase 2 – timber frame fabrication - September 5-15
Community Hand Raising: September 14-15

Register online at www.TFGuild.org or call the Guild office.

We look forward to seeing you all there!

The Timber Framer's Panel Company

Foard PANEL

A Full Service Panel Company:
Design, Manufacturing, Precutting,
Technical Support, Installation



Ultimate Flexibility:

- EPS, NEO, XPS, & PIR cores
- 4' & 8' wide SIPs
- 4' to 24' long

www.foardpanel.com • info@foardpanel.com

1-800-644-8885

53 Stow Drive / PO Box 185
West Chesterfield, NH 03466